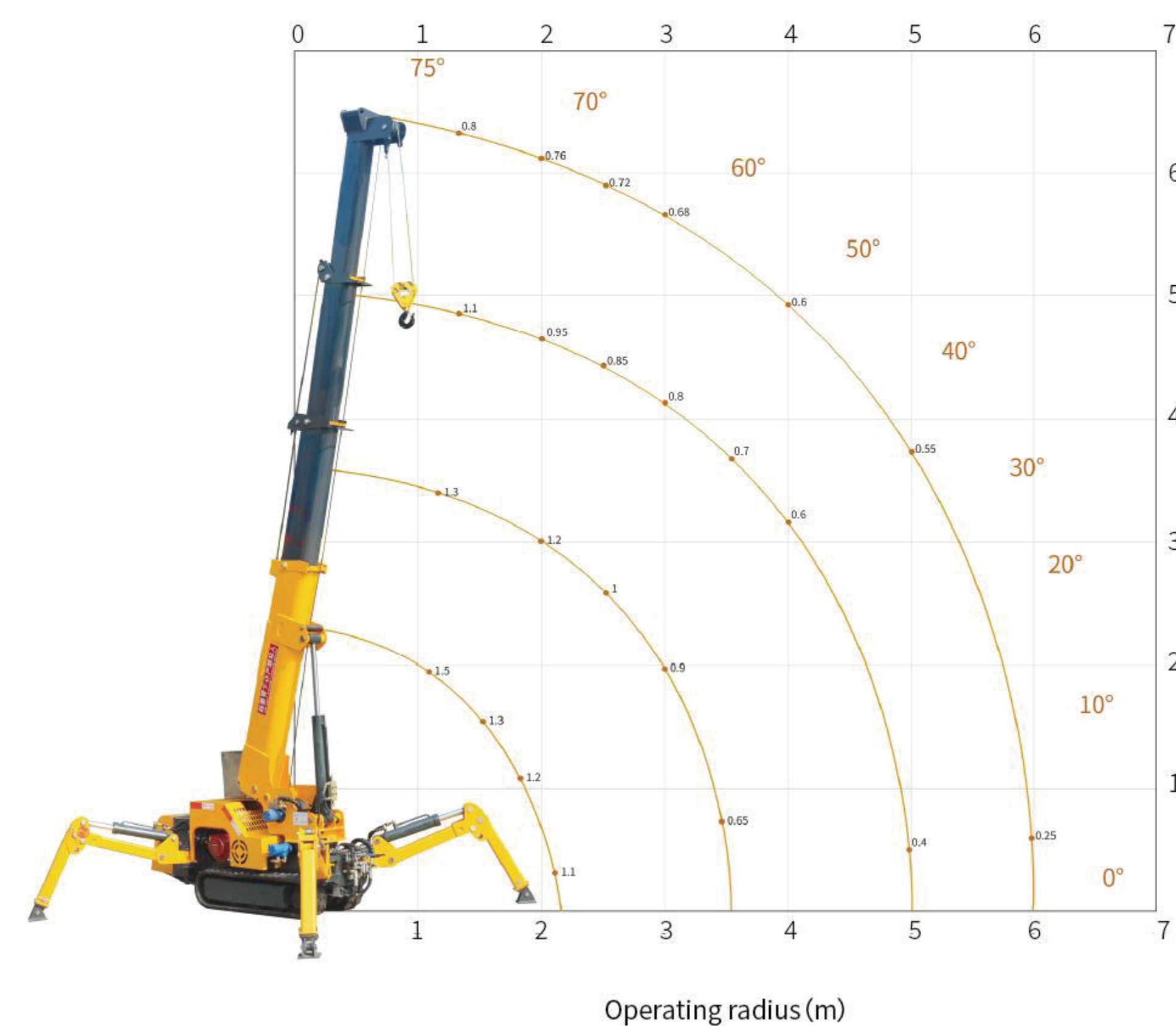


Spider Crane

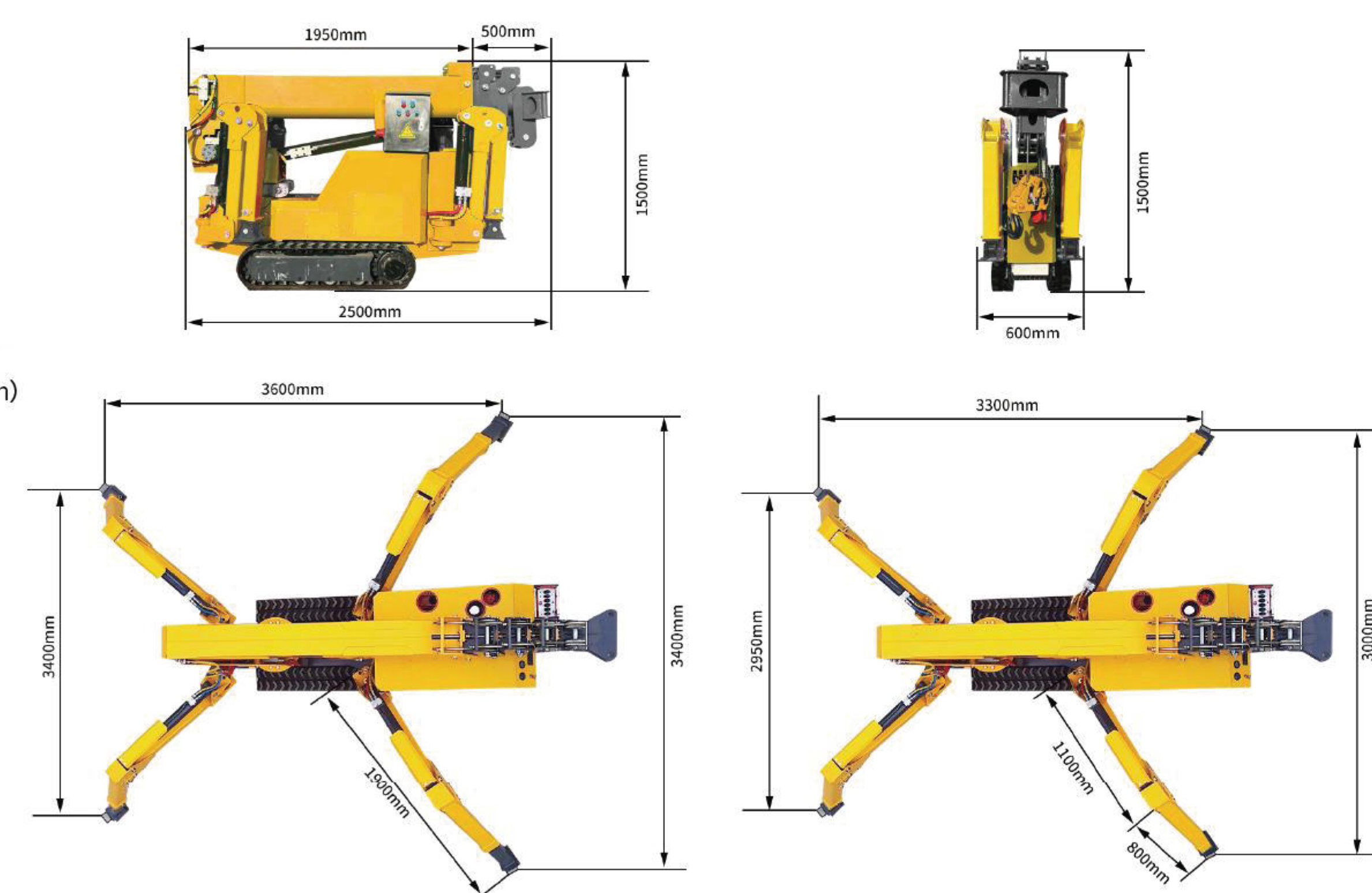
1.5 TON



1.5 ton spider crane lifting weight chart



Dimensional annotation diagram of 1.5T spider crane



Technical Parameters

Model		SC15
Max. Operating Radius		6m
Max. Ground Lift		6.5m
Standard Configuration		Diesel Engine
Overall Dimension (L*W*H)		2.5x0.6x1.5m
Self Weight		1300kg
Track		180 (Width) 72 (Pitch) 37 (Section)
Winch Device Device	Hook Lifting Speed	0-8m/min(4 Ropes)
	Specification Of Steel Wire Rope	Φ8mm×45m
Telescopic Device	Boom Form	2m×4-Section Lifting Arm (Support Customization)
	Boom Length/Time	6.5m/20sec (Support Customization)
Luffing Device	Boom Angle/Time	0-78°/13Sec
Gyroscope	Rotation Angle/Speed	0-360°/(Continuous)60Sec
Outrigger	Outrigger Movement Form	Manual Screw Out+Oil Pressure Automatic Support (Two Legs)
	Max. Extension Amplitude (Mm)	3600 (Length) X3400 (Rear) X3400 (Front)
Running Gear	Walking Mode	Hydraulic Motor Drive
	Walking Speed	0-2.5km/h
	Gradeability	25°(36%)
Electrical Machinery	Voltage	AC380V
Engine	Manufacturer	Honda
	Start Mode	Electric Start
Operating System	Battery Capacity	12v 45AH
	Operation Type (Boom/Leg), Manual Walking	Manual Operation, Manual Walking
Operational Characteristics		Manual Operation

With technological innovation our product configuration and parameters will continue to change without notice.

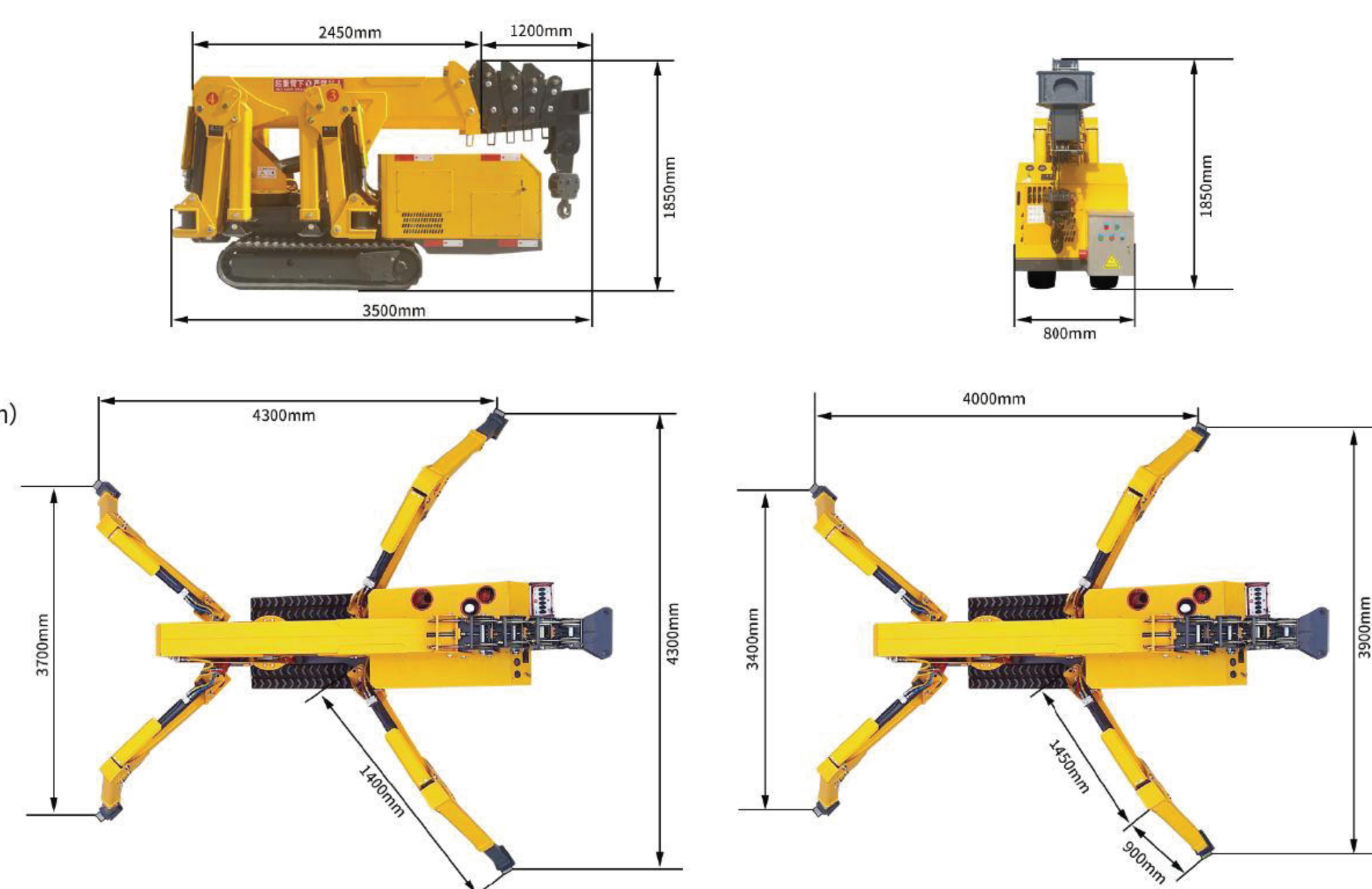
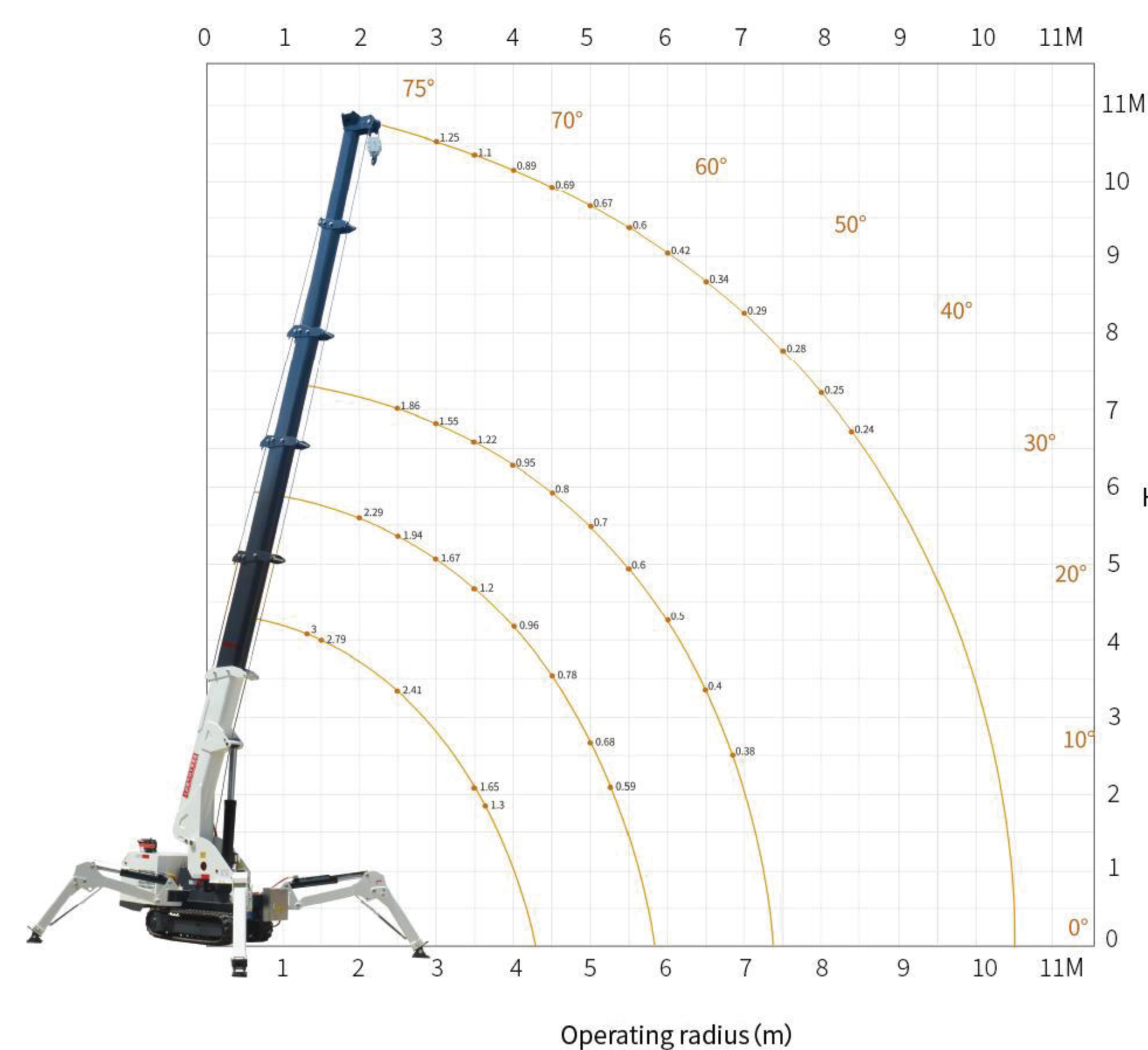
Spider Crane

3 TON



3 ton spider crane lifting weight chart

Dimensional annotation diagram of 3T spider crane



Technical Parameters

Model	SC30	
Max. Operating Radius	10m	
Max. Ground Lift	10.8m	
Standard Configuration	Diesel Engine And Electric Motor (Dual Power)	
Overall Dimension (L*W*H)	3.5X0.8X1.85m	
Self Weight	2.7ton	
Winch Device	Hook Lifting Speed	0-8M/Min(4 Ropes)
	Specification Of Steel Wire Rope	Φ8mm×45m
Telescopic Device	Boom Form	2.4m x6-Section Boom (Customizable)
	Boom Length/Time	3.1m-10.8m/20Sec (Adjustable)
Luffing Device	Boom Angle/Time	0-78°/13Sec
Gyroscope	Rotation Angle/Speed	0-360° (Continuous)/60Sec
Outrigger	Outrigger Movement Form	Manual Screw Out + Hydraulic Support (Three-Section Legs Retractable)
	Max. Extension Amplitude	4300 (Length) X3700 (Rear) X4300 (Front)
Running Gear	Walking Mode	Hydraulic Drive
	Walking Speed	0-2.5km/h
	Gradeability	25°(36%)
Electrical Machinery	Voltage	AC380V
Engine	Manufacturer	Yanmar
	Type/Displacement	Changchai Cz380G Three-Cylinder 14.7Kw
	Start Mode	Electric Start
	Fuel/Volume	Diesel/12L
Operating System	Operation Type (Boom/Leg), Manual Walking	MManual Operation, Manual Travel (Optional Remote Control Operation)
	Operational Characteristics	Manual Operation (Remote Operation Optional)

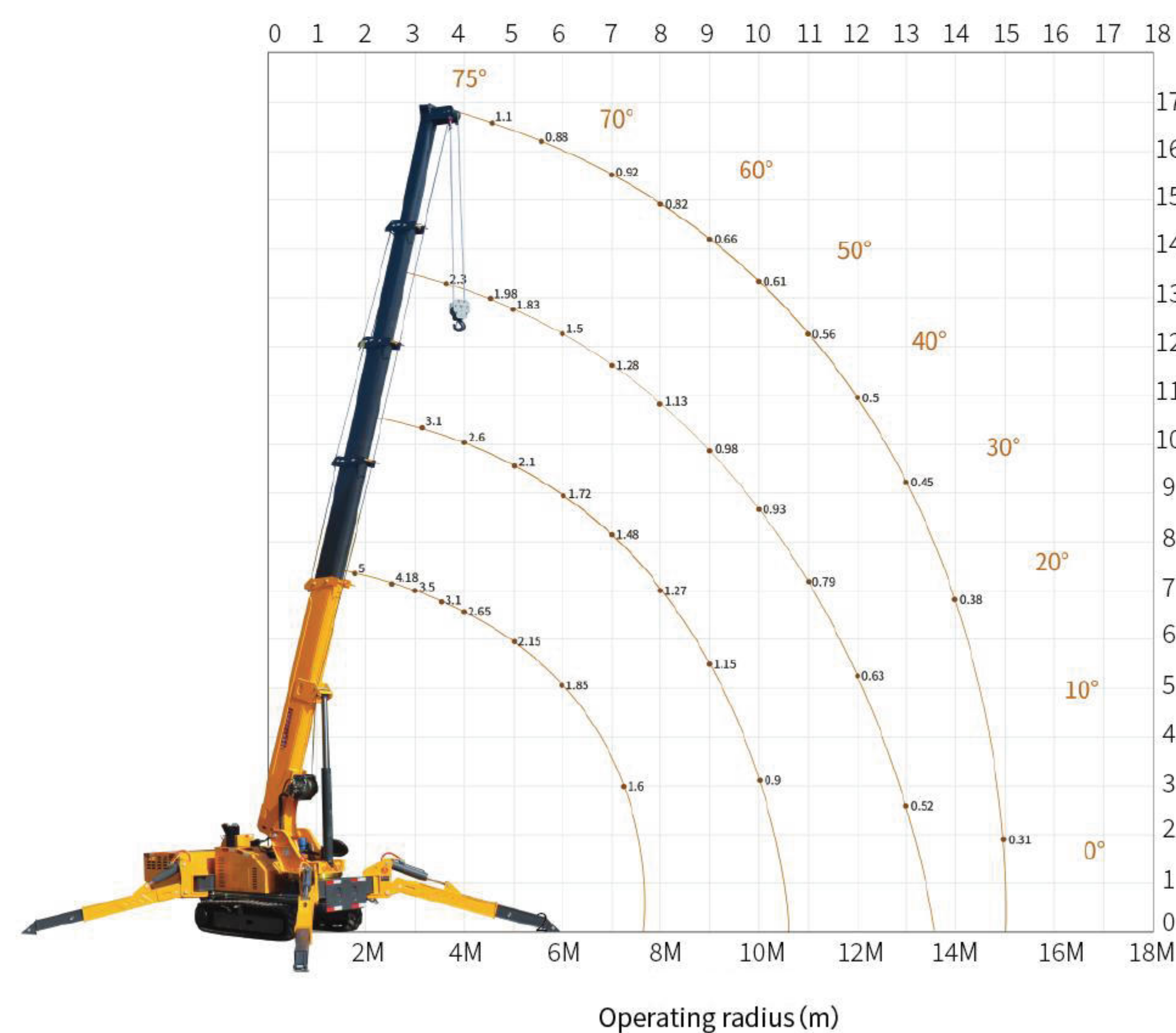
With technological innovation our product configuration and parameters will continue to change without notice.

Spider Crane

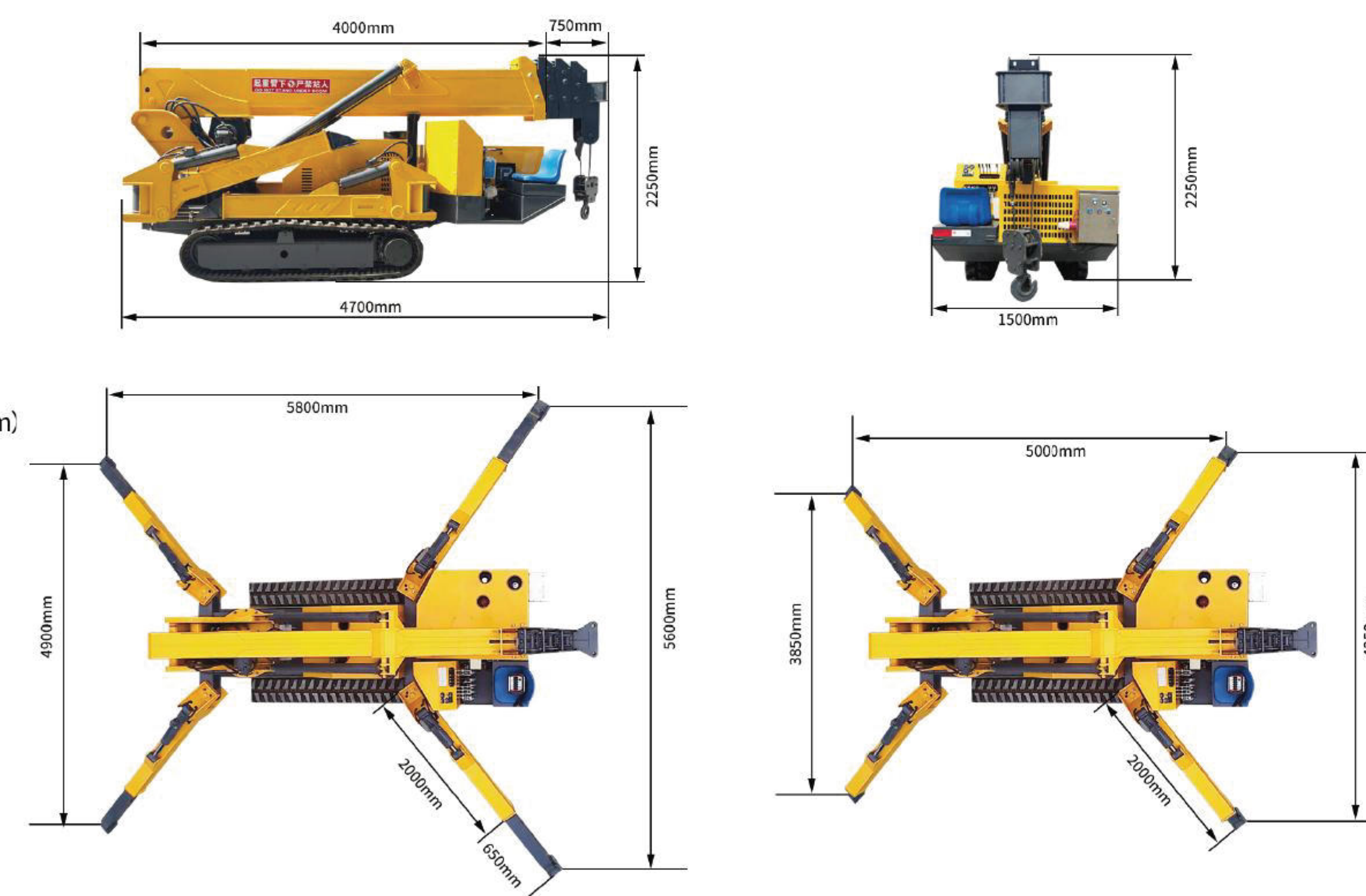
5 TON



5 ton spider crane lifting weight chart



Dimensional annotation diagram of 5T spider crane



Technical Parameters

Model	SC50	
Max. Operating Radius	15m	
Max. Ground Lift	17m	
Overall Dimension (L*W*H)	4.7x1.5x2.25m	
Self Weight	6100kg	
Winch Device	Hook Lifting Speed	12m/min (4 Ropes)
	Specification Of Steel Wire Rope	Φ12mm×80m
Telescopic Device	Boom Form	4m×5-Section Lifting Arm (Support Customization)
	Boom Length/Time	4.5m-17m/54sec (Support Customization)
Luffing Device	Boom Angle/Time	0-78°/13Sec
Gyroscope	Rotation Angle/Speed	0-360° (Continuous)/38Sec
Outrigger	Outrigger Movement Form	Manual Screw Out+Oil Pressure Automatic Support (Two Legs)
	Max. Extension Amplitude (Mm)	5800 (Length) X4900 (Rear) X5600 (Front)
Running Gear	Walking Mode	Hydraulic Motor Drive /Double Speed
	Walking Speed	0-2.5km/h
	Gradeability	25°(36%)
Electrical Machinery	Voltage	AC380V
Engine	Manufacturer	Yanmar
	Start Mode	Electric Start
	Start Performance	-50°C-40°C
	Battery Capacity	12V 45Ah
Operating System	Operation Type (Boom/Leg), Manual Walking	Manual Operation, Manual Travel (Optional Remote Control Operation)
	Operational Characteristics	Manual Operation (Remote Operation Optional)

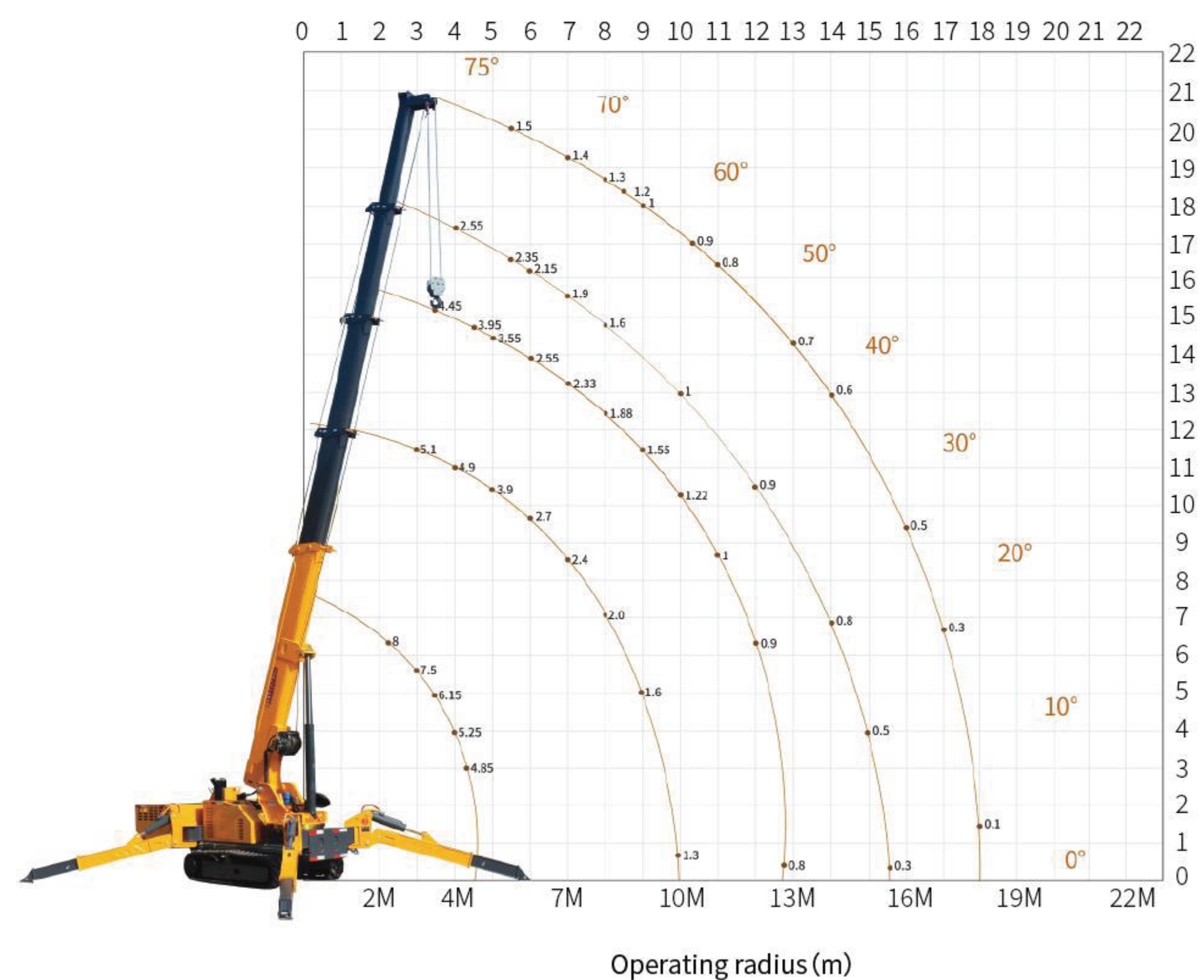
With technological innovation our product configuration and parameters will continue to change without notice.

Spider Crane

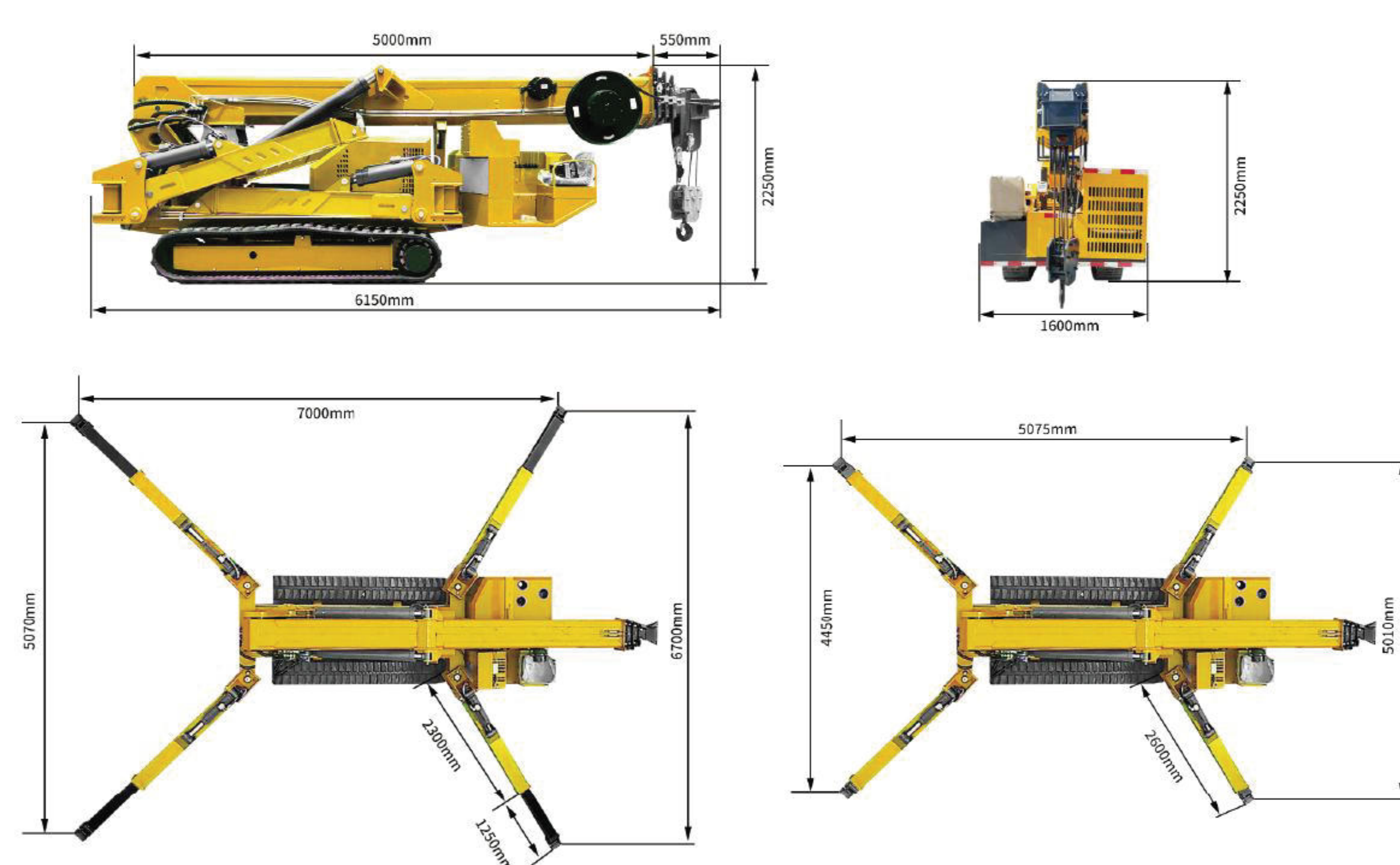
8 TON



8ton spider crane lifting weight chart



Dimensional annotation diagram of 8T spider crane



Technical Parameters

Model	SC80	
Max. Operating Radius	18m	
Max. Ground Lift	21m	
Overall Dimension (L*W*H)	6.15x1.6x2.25m	
Self Weight	8700kg	
Winch Device	Hook Lifting Speed	12m/min (4 Ropes)
	Specification Of Steel Wire Rope	Φ12mm×80m
Telescopic Device	Boom Form	5m×5-Section Lifting Arm (Support Customization)
	Boom Length/Time	5.5m-21m/54Sec (Support Customization)
Luffing Device	Boom Angle/Time	0-78°/13Sec
Gyroscope	Rotation Angle/Speed	0-360° (Continuous)/60Sec
Outrigger	Outrigger Movement Form	Manual Screw Out+Oil Pressure Automatic Support (Two Legs)
	Max. Extension Amplitude	7000 (Length) X5070 (Rear) X6700 (Front)
Running Gear	Walking Mode	Hydraulic Motor Drive /Double Speed
	Walking Speed	0-2.5km/h
	Gradeability	25°(36%)
Engine	Manufacturer	Yanmar
	Start Mode	Electric Start
	Fuel/Volume	Diesel Oil/8L
Operating System	Operation Type (Boom/Leg), Manual Walking	Manual Operation, Manual Travel (Optional Remote Control Operation)
	Operational Characteristics	Manual Operation (Remote Operation Optional)

With technological innovation our product configuration and parameters will continue to change without notice.

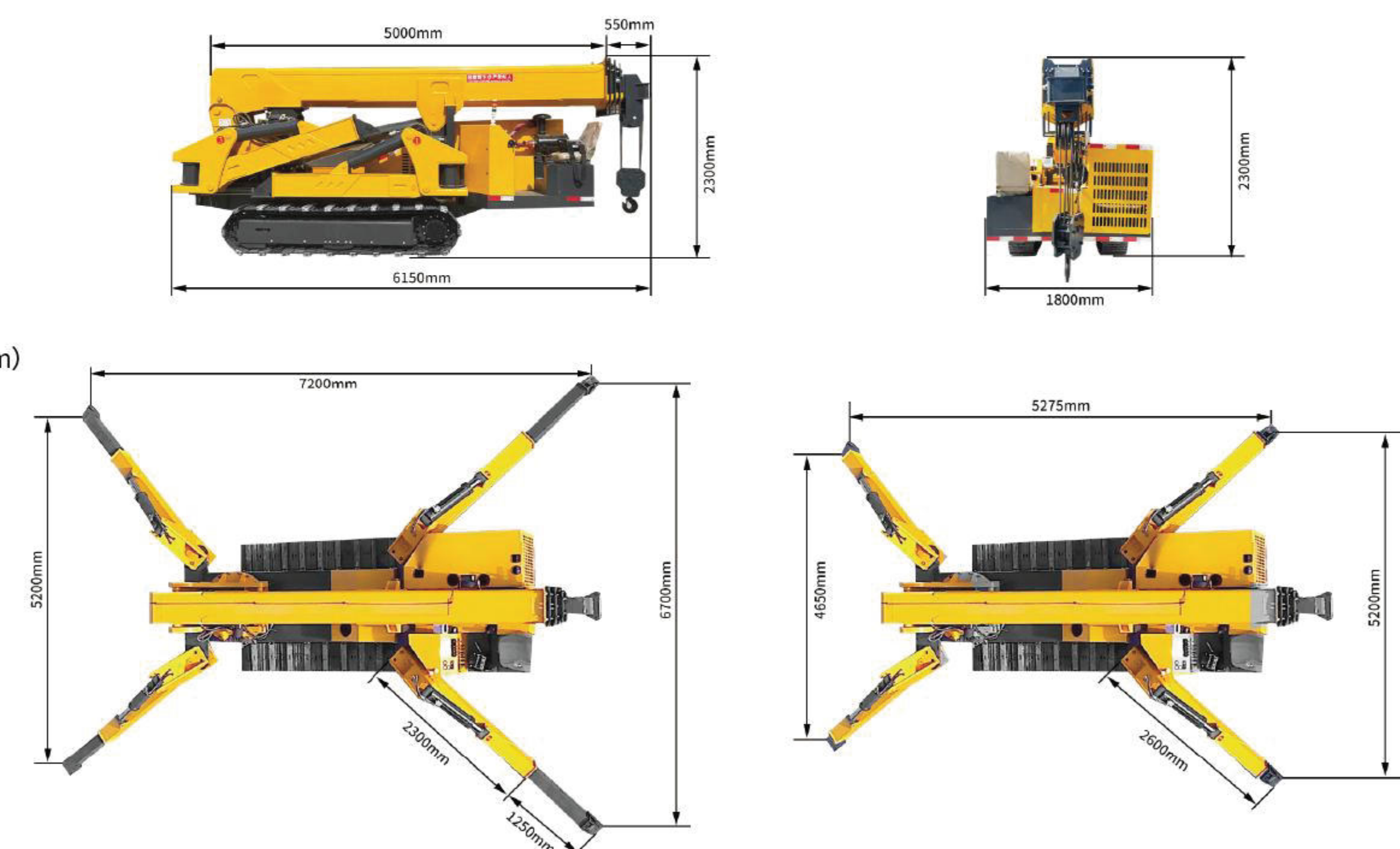
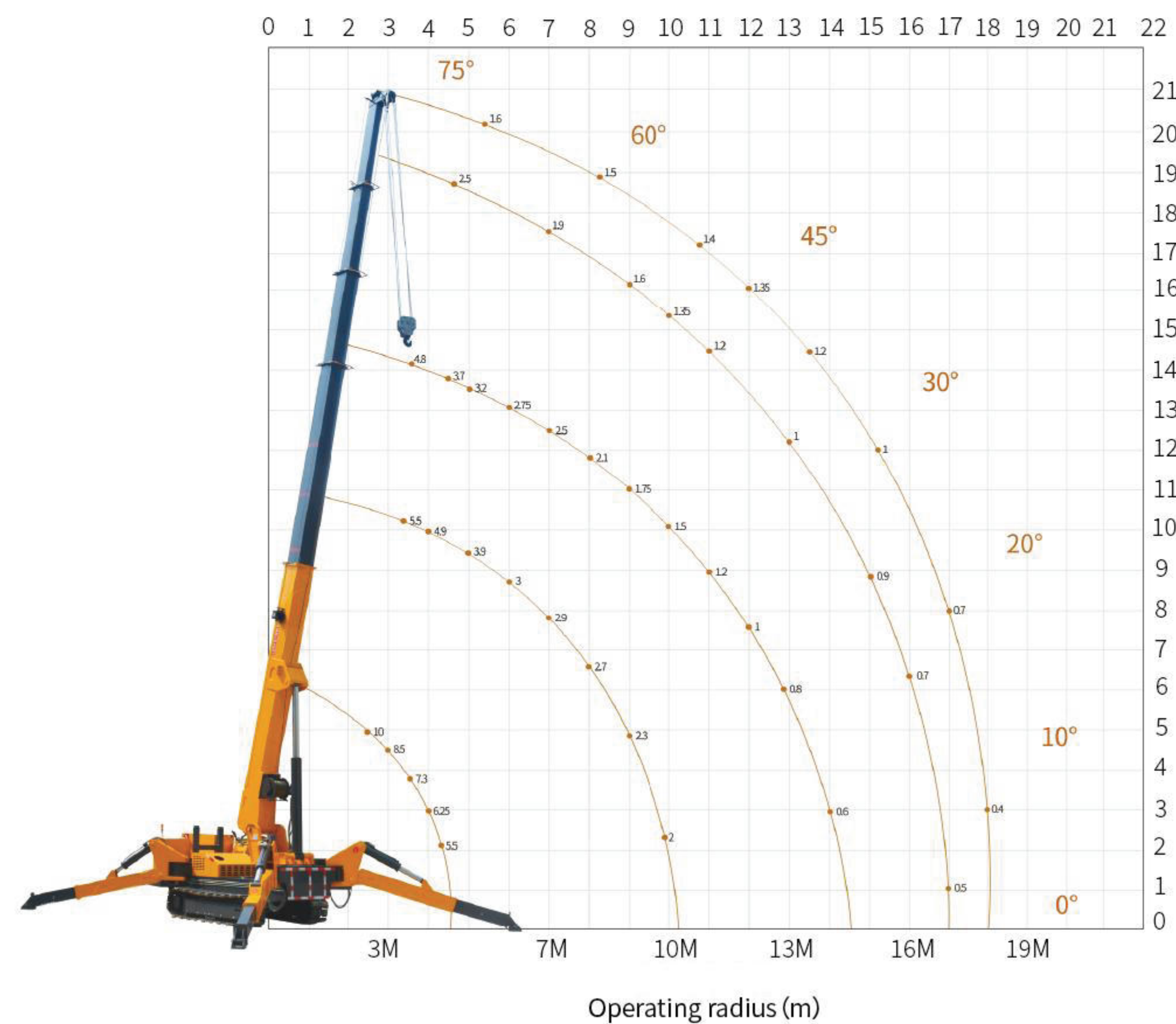
Spider Crane

10 TON



10 ton spider crane lifting weight chart

Dimensional annotation diagram of 10T spider crane



Technical Parameters

Model	SC100	
Max. Operating Radius	18m	
Max. Ground Lift	21m	
Overall Dimension (L*W*H)	6.15x1.6x2.25m	
Self Weight	10500kg	
Winch Device	Hook Lifting Speed	11m/min (4 ropes)
	Specification Of Steel Wire Rope	Φ12mm×100m
Telescopic Device	Boom Form	5m×5-Section Lifting Arm (Support Customization)
	Boom Length/Time	5.5m-21m/54Sec
Luffing Device	Boom Angle/Time	0-78°/15Sec
Gyroscope	Rotation Angle/Speed	0-360° (Continuous)/40Sec
Outrigger	Outrigger Movement Form	Manual Screw Out + Hydraulic Retraction + Automatic Support
	Max. Extension Amplitude (Mm)	Left And Right (7000) Front And Back (6500)
Running Gear	Walking Mode	Hydraulic Motor Drive /Double Speed
	Walking Speed	0-2.5km/h
	Gradeability	25°(36%)
Engine	Manufacturer	Yanmar
	Start Mode	Electric Start
	Fuel/Volume	Diesel Oil/8L
Operating System	Operation Type (Boom/Leg), Manual Walking	Manual Operation, Manual Travel (Optional Remote Control Operation)
	Operational Characteristics	Manual Operation (Remote Operation Optional)

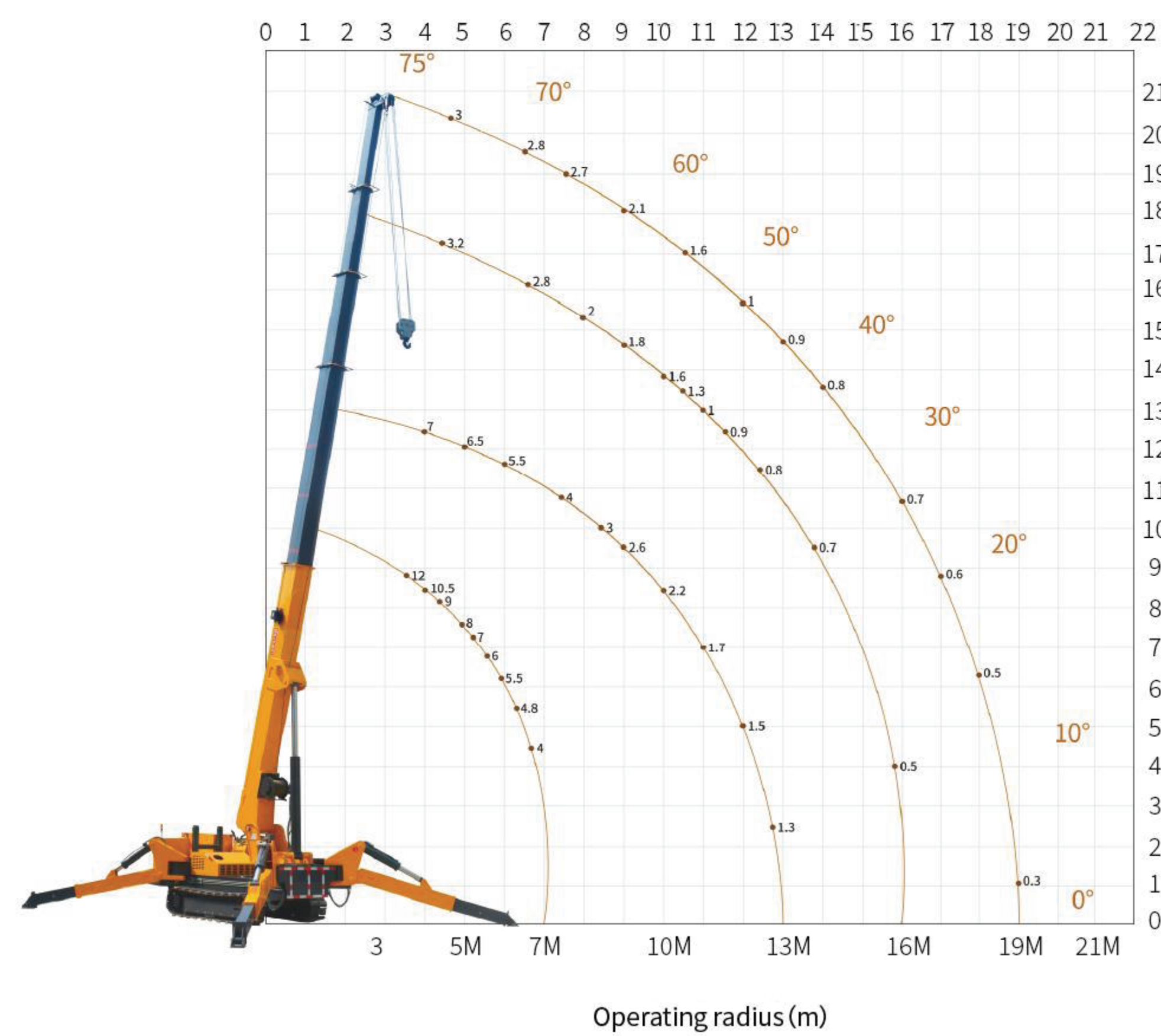
With technological innovation our product configuration and parameters will continue to change without notice.

Spider Crane

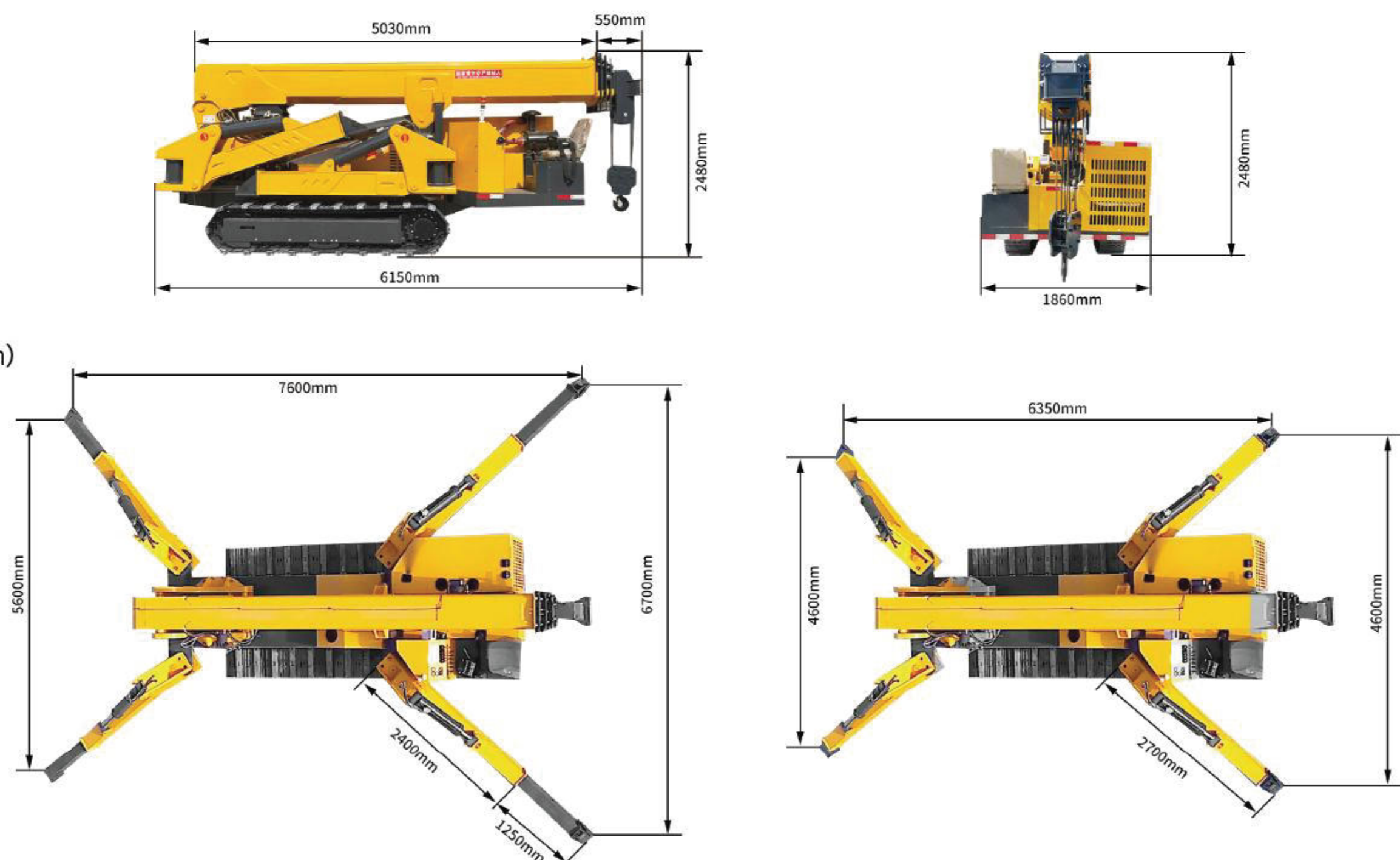
12 TON



12ton spider crane lifting weight chart



Dimensional annotation diagram of 12T spider crane



Technical Parameters

Model	SC120	
Max. Operating Radius	19m	
Max. Ground Lift	21m	
Overall Dimension (L*W*H)	6.15x1.86x2.48m	
Self Weight	12500kg	
Track Size	400 (Width) 270 (Pitch) 22 (Section)	
Winch Device	Hook Lifting Speed	10m/min (4 Ropes)
	Specification Of Steel Wire Rope	Φ12mm X 120m
Telescopic Device	Boom Form	5m X 5-Section Lifting Arm (Support Customization)
	Boom Length/Time	5.5m-21m/54Sec
Luffing Device	Boom Angle/Time	0-78°/17Sec
Gyroscope	Rotation Angle/Speed	0-360° (Continuous)/42Sec
Outrigger	Outrigger Movement Form	Manual Screw Out + Hydraulic Retraction + Automatic Support
	Max. Extension Amplitude	7600(Length) X 5600 (Rear) X 6700 (Front)mm
Running Gear	Walking Mode	Hydraulic Motor Drive
	Walking Speed	0-2.5km/h
	Gradeability	25°(36%)
Engine	Manufacturer	Yanmar
	Start Mode	Electric Start
	Fuel/Volume	Diesel Oil/8L
Operating System	Operation Type (Boom/Leg), Manual Walking	Manual Operation, Manual Travel (Optional Remote Control Operation)
	Operational Characteristics	Manual Operation (Remote Operation Optional)

With technological innovation our product configuration and parameters will continue to change without notice.